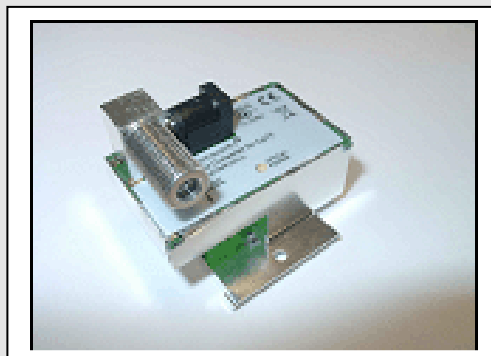




Media Converter for CATV



Installation Guide

Copyright

This manual is published by 42Networks AB, without any warranty. Improvements and changes to this guide necessitated by typographical errors, inaccuracies of current information, or improvements to programs and/or equipment, may be made by 42Networks AB at any time and without notice. Such changes will, however, be incorporated into new editions of this guide.

All rights reserved. © 42Networks AB 2007

Table of Contents

1. Introduction	4
2. Installation	5
2.1. Installation requirements	5
2.2. Installations MCC	5

1. Introduction

Read this installation instruction carefully before installation the Media Converter for CableTV (MCC). It describes how to install the MCC in the Fiber Termination Unit (FTU).

Please note that this installation guide is intended for experienced person with knowledge in CPE installations.

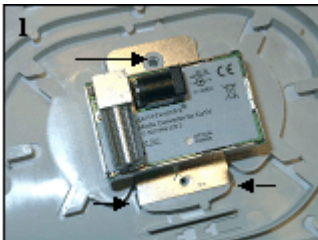
2. Installation

2.1. Installation requirements

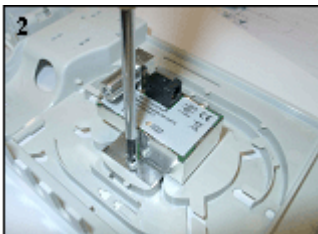
For this installation you only need as a tool a crossheaded screwdriver.

2.2. Installations MCC

The MCC is placed inside the FTU. The hole in the metal plate should match with the plastic bushing at the top and the metal lips should match with the shape of the fiber tray at the bottom.



Then you screw the parker screw in the base of the FTU.



Then you plug the SC-APC optical connector (note: the locating spigot of the connector is upside). In case of for pigtail splicing and fiber management, please refer to Tycoelectronics where you will find comprehensive information.



Fix the cover of the FTU, tighten the screw and connect the RF connector (F) and the power supply jack connector.



The led indicates the status of the receiver :
red: supply OK but optical power too low.
green: supply OK and optical power OK.